

# University of Wollongong (UoW)

## (3 + 1)

Pre-Departure Info Session 2020

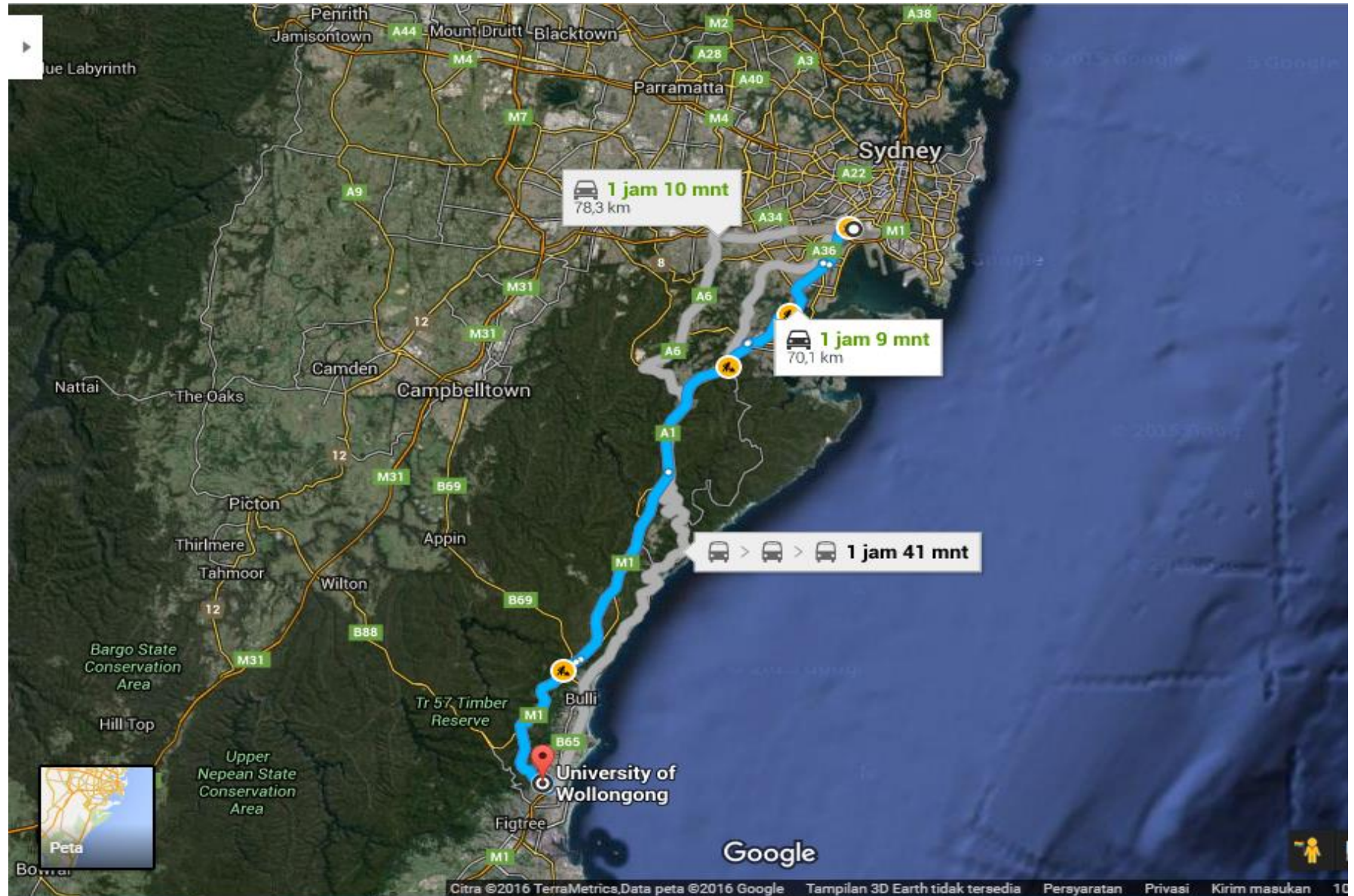
# University of Wollongong



The University of Wollongong has experts encompassing the entire breadth of the underlying sciences, IT, engineering and mathematical methodologies in the ICT industry. We have one of the strongest schools for building, deploying and managing the latest computing technologies and business computing systems.

Working closely with industry partners we ensure all programs remain relevant to industry trends and developments. Students study real-world projects and interact with and learn from industry professionals to ensure their career-readiness upon graduation.

# Distance from Airport





# Train route (accommodation)

People  
Innovation  
Excellence



## Transport is cheap and easy

Wollongong is close to Sydney – just 90 minutes by road or train. Once you arrive here, your transport options around the city are safe, easy and cheap.



### CAR

UOW runs a carpooling parking program, so if you have two or more friends in your car, you get free parking on campus.



### FREE BUSES

Wollongong is well-connected with buses going to all of the surrounding suburbs.

Free 'city loop' buses run all day and into the night, making it easy for you to travel from campus and student accommodation to the city centre, train station, beaches and shopping district.



### TRAIN

North Wollongong Station is a 15-minute walk or a short free shuttle bus ride from our main campus.



### BICYCLE

UOW has more than 900 bike racks for secure and convenient bike parking, and also offers a bike share program.



### WALK

Most destinations in Wollongong are an easy walk away.



### COST

You can buy an Opal Card to pay for trains, ferries, buses and light rail in the Wollongong region and the greater Sydney area of NSW. By using the system, the price for public transport is capped, meaning you can travel as much as you like and never pay more than \$15.40 a day or \$63.20 a week.\*

## Compare the cost of living

Wollongong enjoys a very reasonable cost of living which means you can focus your efforts on your study, not your finances.

Being a student city, the cost of living in Wollongong is lower than many other cities in Australia, including Sydney and Melbourne.

### AVERAGE COSTS IN WOLLONGONG



#### EGGS

\$4.56 - 12 REGULAR



#### BREAD

\$2.65 LOAF



#### COLA

\$3.00 BOTTLE



#### COFFEE

\$3.50 AT RUSH WITH UNILIFE MEMBERSHIP



#### MILK

\$1.50 - 1L



#### NOODLES

\$0.80 INSTANT



#### RICE

\$2.69 - 1KG

### AUSTRALIAN CITY RENT COMPARISONS PER MONTH FOR 3 BEDROOM APARTMENT:



WOLLONGONG -	\$2,080*
LIVERPOOL -	\$2,037
SYDNEY CBD -	\$4,106*
MELBOURNE CBD -	\$2,882*

# ARROUND CAMPUS



Wollongong  
Breakwater Lighthouse



Shellharbour South Beach



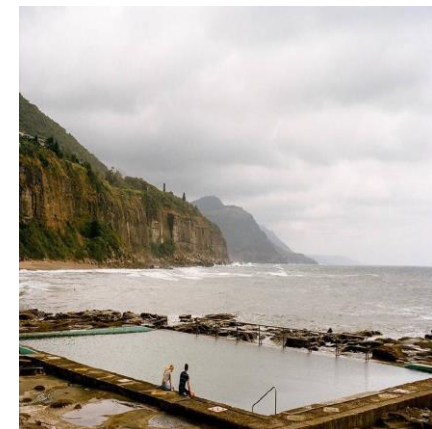
Cataract Dam



Illawarra Live Steamers



Bass Point



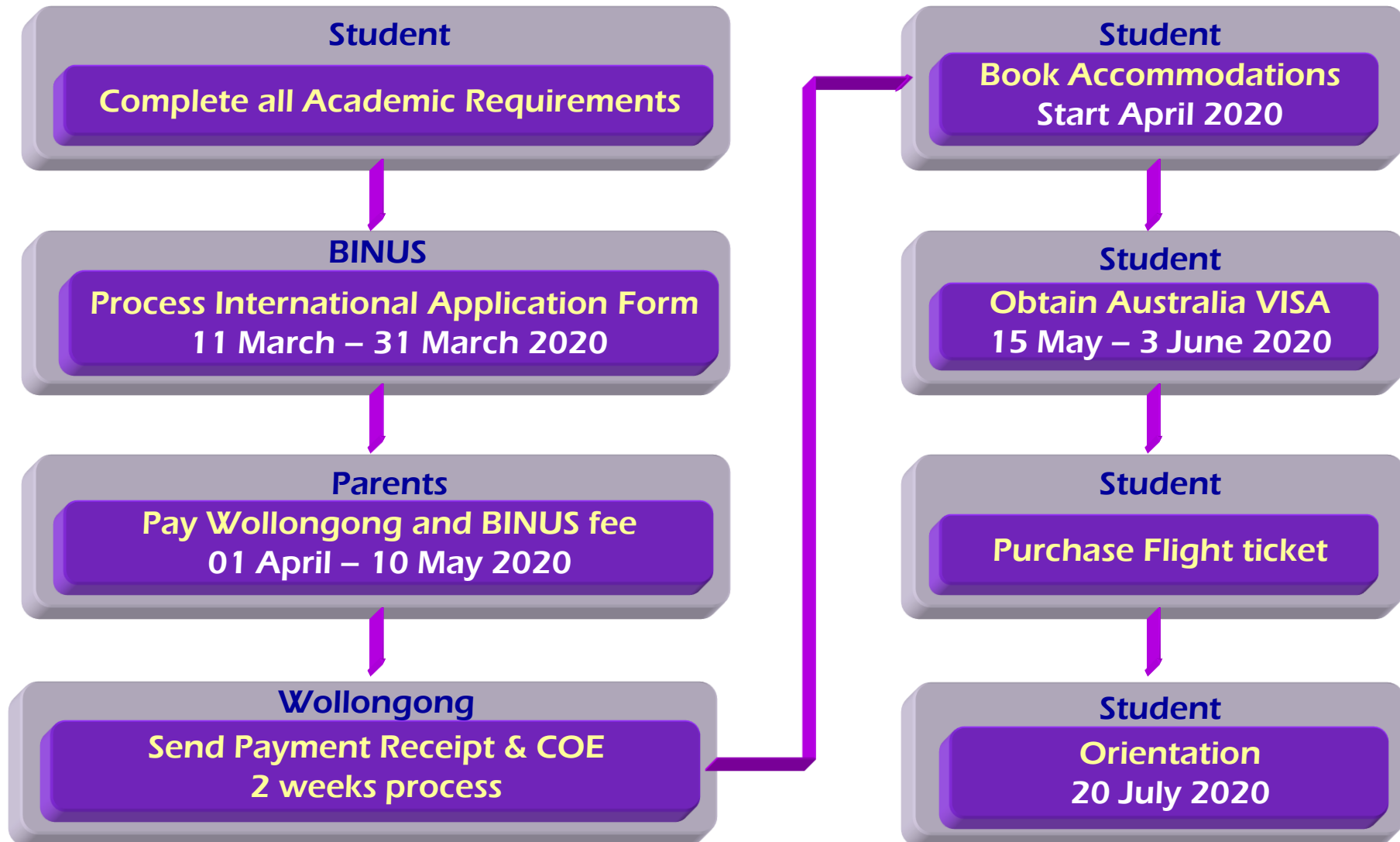
Coalcliff

# AIRPORT PICK-UP REQUEST FORM

- The University offers a complimentary Airport Pick Up Service for all newly enrolling International UOW students.
- The University also provides this service for newly enrolling UOW College students who have a progressive offer for a University of Wollongong degree course\* and who are arriving in Australia for the first time.
- You will be collected from Sydney Airport International or Domestic terminal and transported directly to your Wollongong accommodation destination.
- Details are on the site <http://www.uowairportpickup.com.au/>
- Complete the application form: <http://uowairportpickup.com.au/request-a-pickup/> at least **72 hours** before your arrival. A confirmation number will be sent to the email address you nominate.



# Timeline





## Academic calendar 2020

### Bachelor of Computer Science

• 20 July 2020	<b>Orientation</b>
• 27 July 2020	<b>Lectures Commence (weeks 1-9)</b>
• 03 December 2020	<b>Release of Results</b>





## Approximate Fees and Costs

### Wollongong University Fee and costs:

- Tuition Fee : AUD\$ 33,840/year
- OSHC : AUD\$ 1,568
- BINUS University Fee : 1 years fixed tuition

### Approximate Living cost:

We require that you budget an approximate minimum of AUD \$27,000 - \$35,000 per year for ongoing living costs (excluding tuition fees and airfares).



## **Academic Requirements:**

- 1. Completed all BINUS Course From Semester 1 – 6**
- 2. IELTS (Academic) Score :** Overall score of 6.0 no band less than 6.0
- 3. Minimum GPA:** 2.6 out of 4.0



# Accommodation information:

## Key objectives

- Support University enrolment and retention strategies by providing affordable student residence living opportunities for at least 10% of students in the Wollongong area.
- Develop University residence properties that provide an encouraging environment that cultivates the Attributes of a Wollongong Graduate in its residents.
- Provide a welcoming, safe and sensitive environment to diverse cultures in residence and local community.
- Expand the services and facilities within residence properties that attracts students and encourage participation in the UOW education experience.
- Ensure effective financial stewardship and accountability.
- Foster a climate of environmental knowledge and responsibility.
- By living in one of the student residences you will benefit from an environment committed to providing high academic achievement, involvement, development and fun. The convenient locations, the professional staff, the community environment and the many social, cultural and sporting events that are held all add to the vibrant atmosphere of Accommodation Services. Rarely will you have the chance to live in a community that has people from so many walks of life and countries.

Accommodation Services has partnered with student.com to assist international students attending UOW to access supportive, secure and sustainable residential communities and advice on housing alternatives.

	Weekly Price	Contract Length	Type	Kitchen / Catered	Bathroom	Furnished	Free Wi-Fi
<b>MARKETVIEW</b> 60 Market Street, Wollongong							
Self Catered 1 Bed Hotel Style Room	\$294	52	Single	Shared	Private	✓	✓
Self Catered 1 Bed Hotel Style Room - Premium	\$305	52	Single	Shared	Private	✓	✓

<b>WEERONA COLLEGE</b> Cnr Throsby Drive and Foleys Road, Gwynneville							
Fully Catered Twin Rooms	\$231	45	Twin	19 Meals	Shared	✓	✓
Fully Catered Single Rooms	\$288	45	Single	19 Meals	Shared	✓	✓

<http://www.uow.edu.au/accommodation/index.html>



## Accommodation on campus information:

	Weekly Price	Contract Length	Type	Kitchen / Catered	Bathroom	Furnished	Free Wi-Fi
<b>CAMPUS EAST</b> Innovation Way, North Wollongong							
Flexi Catered Single Room in Shared 3, 4 & 5 Bedroom Units*	\$195	45	Single	Flexi catered	Shared	✓	✓
Self Catered Single Room in Shared 2 Bedroom Unit	\$282	45	Single	Shared	Shared	✓	✓
Self Catered Single Room in Shared 4 & 5 Bedroom Units	\$282	45	Single	Shared	Shared	✓	✓
Self Catered 1 Bedroom Unit	\$289	45	Single	Private	Private	✓	✓

<b>INTERNATIONAL HOUSE</b> Cnr Porter and Hindmarsh Avenue, North Wollongong							
Fully Catered Twin Rooms	\$231	52	Twin	19 Meals	Shared	✓	✓
Fully Catered Single Rooms	\$288	52	Single	19 Meals	Shared	✓	✓

<http://www.uow.edu.au/accommodation/index.html>





## Accommodation information:

	Weekly Price	Contract Length	Type	Kitchen / Catered	Bathroom	Furnished	Free Wi-Fi
<b>KOOLOOBONG – BUILDING 37</b> O’Leary Road, Keiraville							
Self Catered Single Room in a Shared 5 Bedroom Unit	\$220	52	Single	Shared	Shared	✓	✓
<b>KOOLOOBONG – BUILDING 68</b> O’Leary Road, Keiraville							
Self Catered Single Room in a Shared 4 Bedroom Unit	\$288	44	Single	Shared	Shared	✓	✓
Self Catered 1 Bed Studio	\$308	44	Single	Private	Private	✓	✓
Self Catered 1 Bed Premium Studio	\$337	44	Single	Private	Private	✓	✓
<b>KOOLOOBONG – BUILDINGS 73, 74, 75</b> Northfields Avenue, Keiraville							
Self Catered Single Room in a Shared 4 Bedroom Unit	\$288	45	Single	Shared	Shared	✓	✓
Self Catered 1 Bed Studio	\$308	45	Single	Private	Private	✓	✓
Self Catered 1 Bed Premium Studio	\$337	45	Single	Private	Private	✓	✓

<http://www.uow.edu.au/accommodation/index.html>



## Important information

### CATERING ARRANGEMENTS

The fully catered residences (Weerona and International House) offer 19 meals per week served in a common Dining Room. The cost of this food service is included in the weekly rental fee.

\*\* At Campus East, the weekly rental fee does not include the cost of food. Residents can purchase a meal plan from the on-site cafe. There are limited catering facilities for those living in the flexi-catered units. These include a small communal kitchen, microwaves, two BBQs, nearby supermarkets and restaurants in Fairy Meadow. All Campus East residents have access to purchasing a range of café style food Sunday to Friday.

At self-catered residences, residents prepare and cook their own meals in their studio, unit, or shared kitchen.

### APPLICATION FEE: \$27<sup>^</sup>

<sup>^</sup> A non-refundable Application Fee is payable at the time you submit your application on line. Your application will not be considered until such time as this fee is paid.

### RESIDENTIAL FEE PRE-PAYMENT: \$500

This pre-payment is a non-refundable deposit which reserves your place in accommodation. The pre-payment is made through the accommodation portal at the time of accepting your offer of accommodation.

### ANCILLARY FEES<sup>#</sup>

Community Activity Fund	\$211
Services & Infrastructure	\$206
Student Room & Contents Insurance	\$83

<sup>#</sup> Ancillary Fees are payable by all residents and will appear on your first residential fees statement.

### OPTIONAL PARKING

Motor vehicle residence parking permit	\$638
Motorbike Residence Parking Permit	\$71.50

Parking permits are subject to availability.

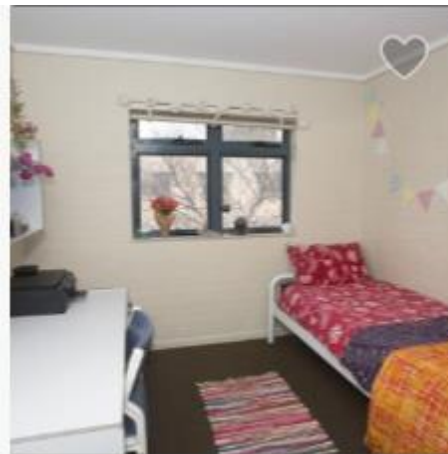
### CONTRACT LENGTHS

Yearly contracts		Half-year contracts	
44 weeks	9/2/20 – 13/12/20	22 weeks Session 1	2/2/20 – 5/7/20***
45 weeks	2/2/20 – 13/12/20	22 weeks Session 2	5/7/20 – 6/12/20***
52 weeks	2/2/20 – 31/1/21	30 weeks Session 2	5/7/20 – 31/1/21

Residents are responsible for fees from the start to the end of your applicable contract period which will be outlined in your letter of offer.

\*\*\* 22 week contracts are only offered to incoming Study Abroad and Exchange students

## Off campus Accommodation information:



### Campus East - University of Wollon...

 About    +3 [Map](#)

On-Campus Flexible meal options

 48 min  15 min  8 min

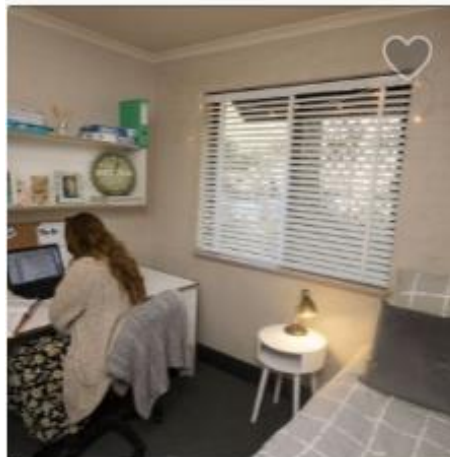
From

**A\$195**

/week


Private Room A\$195

[View rooms](#)



### Kooloobong Village - University of ...

★ ★ ★ ★ (2)

 About [Map](#)

On-Campus Flexible meal options

 8 min  21 min  2 min

From

**A\$220**

/week

Private Room A\$220

[View rooms](#)

More Info Click [Here](#)

Reservations please email to : [elson.wang@student.com](mailto:elson.wang@student.com) or WA: +60-163301382

## Off campus Accommodation information:



The screenshot shows a listing for 'Mantra Wollongong'. On the left is a photo of a hotel room with a large bed and a window. To the right of the photo, the title 'Mantra Wollongong' is displayed. Below the title are links for 'About', 'Map', and '+4'. Further down, travel times are listed: 42 min (walking), 27 min (train), and 7 min (car). On the right side of the listing, the price is shown as 'From A\$1,078 /week'. Below this, it says 'Entire Place A\$1,078'. At the bottom right is a yellow button that says 'View rooms →'.

More Info Click [Here](#)

Reservations please email to : [elson.wang@student.com](mailto:elson.wang@student.com) or WA: +60-163301382





## Average monthly cost of living in Wollongong

ACCOMMODATION TYPE	Rent	Food prepared at home (& other groceries)	Bills (eg. electricity)	Local travel costs	Personal purchases (clothing, internet, textbooks etc)	Total cost (\$ per person, per month)
Shared 2-bed apartment, Wollongong & UOW area (own room)	845*	320	120	124	435	\$1,844
Shared 3-bed shared house, Wollongong & UOW area (own room)	711*	320	80	124	435	\$1,670
Homestay, Wollongong area (single room)	1,274	0	0	124	405	\$1,803
Kooloobong Village, self-catered, single room, shared unit, Bld37 <sup>^</sup>	953	320	0	0	375	\$1,648
Weerona College, fully-catered, single room, shared unit <sup>^^</sup>	1,234	0	0	0	375	\$1,609
Campus East, flexi-catered, single room, shared unit <sup>^^</sup>	836	80	0	0	375	\$1,291

(Indicative costs per person, \$ per month)

\*NSW Department of Family & Community Services Rent Table, March 2019

<sup>^</sup>52-week contract - UOW Student Accommodation

<sup>^^</sup>45-week contract - UOW Student Accommodation

Usefull link:

- <https://www.uow.edu.au/content/groups/public/@web/@unia/documents/doc/uow230288.pdf>



## The situation and risk that could happen

If you have failed courses in Wollongong, you need to discuss with your head of program first by sending an email with choosing the 2 option following below:

- You will extend in Wollongong for 1 semester/ 1 year, to completed the failed course in Wollongong. Eventhough only 1 course.
- Comeback to BINUS and doing the single degree in BINUS only (not get the degree from Wollongong).



**Sutan Rieza Abdillah**

Overseas Program Department

BINUS UNIVERSITY INTERNATIONAL

[sabdillah@binus.edu](mailto:sabdillah@binus.edu)

Phone: 021 – 53696969 Ext 7955

