

Edinburgh Napier University (ENU) (3+1)

Pre Departure Info Session 2019

Edinburgh Napier Introduction



Edinburgh Napier university develop students through our personalized learning and links to industry and find solutions to societal problems through our research.

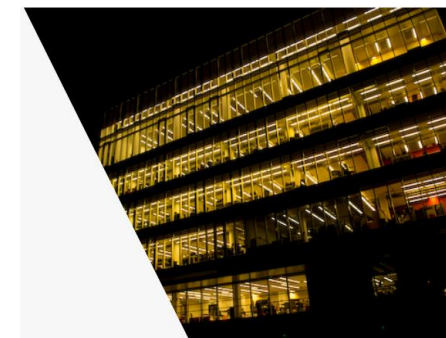
Edinburgh Napier university have three campuses in Edinburgh offering advanced facilities for learning, teaching and research. Based in an iconic, prosperous city and a stunning, ambitious forward thinking country, Edinburgh Napier is a great place to live, work and study.

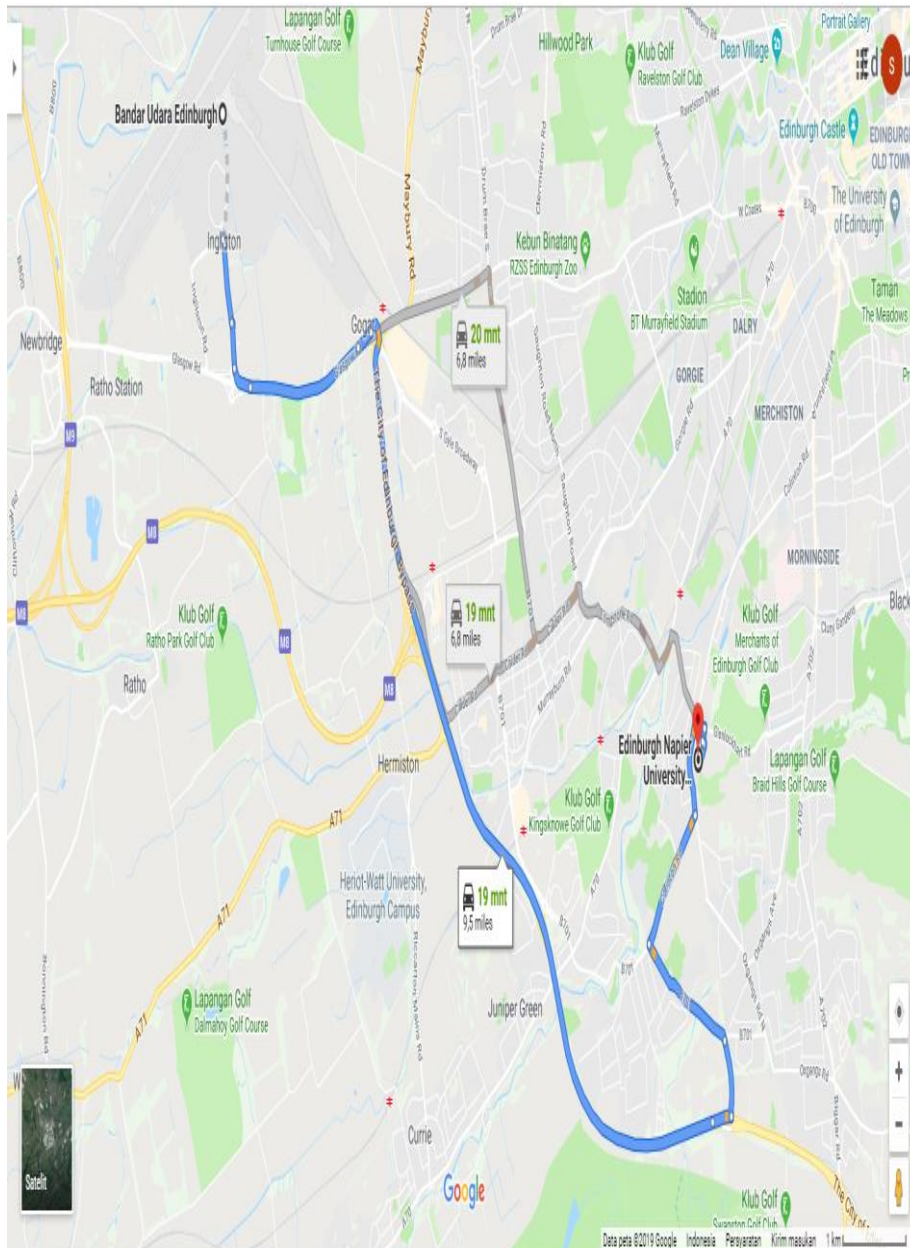
Edinburgh Napier campuses

Craiglockhart campus, Home to the Business School blends the old and the new. Set within attractive grounds overlooking Edinburgh, facilities include 200- and 400-seat lecture theatres and language and multimedia labs. It's also home to our innovation and enterprise center.

Merchiston campus, Engineering and built environment, computing and creative industries students are based at Merchiston. Here you'll find the Jack Kilby Computing Centre, the Edinburgh Napier Students' Association, a computer games lab, newsroom, TV, radio and photography studios and soundproofed industry-standard music studios.

Sighthill campus, serves more than 5,000 students and staff of the **School of Applied Sciences and the School of Health & Social Care**. Facilities include life-like hospital wards, a clinical skills suite, sports science labs and our [EN]GAGE sports center.





Directions from airport

Edinburgh boasts a very efficient network of environmentally friendly buses that will take you all across the city and out to the suburbs. All our campuses are served by Lothian Buses offers for a flat-rate fare throughout the city, making getting to university cheap and easy. What's more, full-time students are also eligible for a Student Ridacard offering discounted travel.

While there is no direct bus service from Edinburgh Airport to the campus, you can easily take Service 100 from the airport (Stance D) to Haymarket Station, walk one minute to Dalry Place, and take Service 4 to "Craiglockhart Campus".

Arround Craiglockhart campus



Camera Obscura and World of Illusions



Gladstone's Land

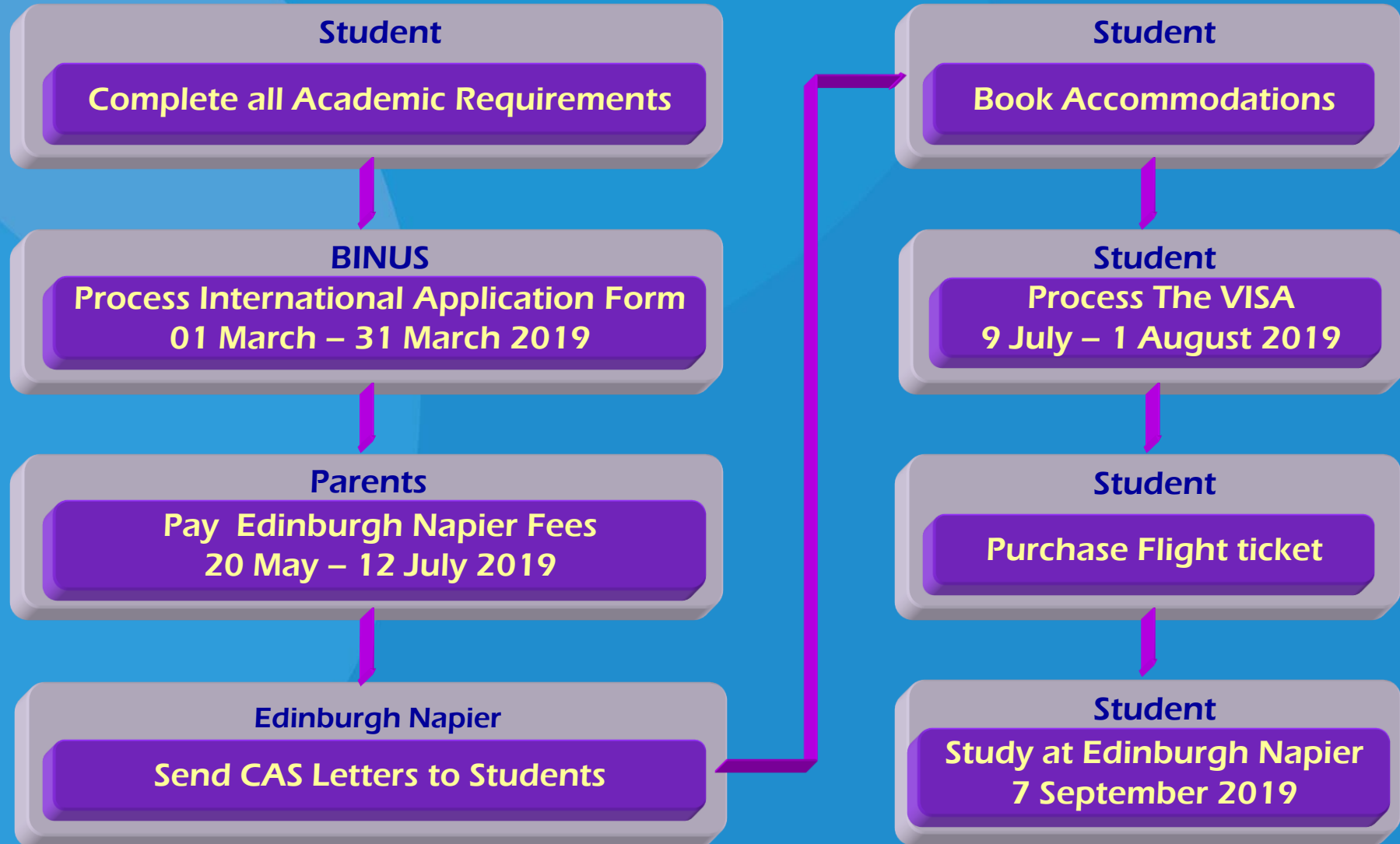


Palace of Holyroodhouse



National Museum of Scotland

Time line*



*schedule may be change due the prior

General Requirement Edinburgh Napier :

- **Completed all BINUS Course From Semester 1 - 6**
- **IELTS (Academic) Score** : Overall score of 6.0 no band less than 5.5
- **Last cumulative GPA Min : 2.8**

Timeline for The Registration Process*

- 1. Application Dateline : March 2019**
- 2. IELTS Certificate can be follow before 15 April 2019**
- 3. Accept The Offer : Before 31 May 2019**
- 4. Payment Dateline : Before 19 July 2019**
- 5. BINUS Will send The latest Transcript to Edinburgh Napier University around 24 July 2019 and Edinburgh Napier University will be release the CAS Letters around 14 August 2019**
- 6. VISA: July – August 2019**

* Could change without notice any prior

Important Dates Edinburgh Napier*

Orientation Week/Enrolment:

Edinburgh Napier : 07 Sept 2019

Start Class:

Edinburgh Napier : 09 Sept 2019

* Could change without notice any prior

Approximate Fees and Costs University Fee for 2019 :

- Edinburgh Napier University : £ 12.845/year
- BP3 BINUS 1 year: please ask student services

LIVING COST :

Edinburgh Napier : £ 13.500/year

Accommodation On campus

2019-20 Rent Calculator												
Standard Tenancies 39 Wks												
Developments	Start of Tenancy	End of Tenancy	Total Days	Total Rent	Daily Rate	Weekly Rate	Advance Payment	Pay in Full After Adv Pay	7 Instalments Thereafter	Last Instalment	2% Amount	Total to pay after 2% and advance payment
Bainfield Ensuite Cluster Flats	06/09/2019	05/06/2020	274	£5,871.82	£21.43	£150.01	£500	£5,371.82	£671.48	£671.46	£117.44	£5,254.38
Bainfield Studio	06/09/2019	05/06/2020	274	£6,458.18	£23.57	£164.99	£500	£5,958.18	£744.77	£744.79	£129.16	£5,829.02
Slateford 2 Bed/1 Bathroom Premium	06/09/2019	05/06/2020	274	£6,850.00	£25.00	£175.00	£500	£6,350.00	£793.75	£793.75	£137.00	£6,213.00
Slateford Ensuite Cluster Flats	06/09/2019	05/06/2020	274	£5,871.82	£21.43	£150.01	£500	£5,371.82	£671.48	£671.46	£117.44	£5,254.38
Slateford Studio	06/09/2019	05/06/2020	274	£6,458.18	£23.57	£164.99	£500	£5,958.18	£744.77	£744.79	£129.16	£5,829.02
Orwell Terrace Cluster Flats	06/09/2019	05/06/2020	274	£5,871.82	£21.43	£150.01	£500	£5,371.82	£671.48	£671.46	£117.44	£5,254.38
Orwell Terrace TWIN 2 Per Bedroom	06/09/2019	05/06/2020	274	£3,836.00	£14.00	£98.00	£500	£3,336.00	£417.00	£417.00	£76.72	£3,259.28

Monthly payments for Bainfield, Slateford and Orwell Terrace will be 10th of the month starting on 10/10/18 & Non-UK based Guarantor Acceptable

PLEASE NOTE THESE PRICES ARE JUST AN EXAMPLE

Explanation/Breakdown of the Rental Costs

Total Days: the total number of days from the start and end of tenancy dates

Total Rent: the total Rental Cost (Total Days x Daily Rate)

Daily Rate: the weekly rate divided by the 7 days of the week

Advance Payment: the £500 advance rent payment students pay when applying on the online application system for student accommodation

Pay in Full/After Advance Rent Payment: the Total Rent minus the £500 Advance Payment

8/10 Instalments: the amount students will pay monthly from 10/01/2019 until 10/05/2020 OR 10/07/2020

Example: John Smith is studying Engineering and therefore requires a 39 week tenancy. He has been allocated in an ensuite accommodation at Bainfield at £150 per week.

John's total rental was £5871.82 but after he applied for sccommdoation and made £500 Advance Rent Payment his total outstanding rental cost is now £5371.82.

John's has decided to pay in monthly instalments so he sets up a Recurring Card Payment via Epay (instructions per his reservation email)

as per the Installment plan he will pay 7 instalments of £671.48 on 10th of Oct, Nov, Dec, Jan, Feb, March & April. John will then have an 8th installment rental payment on 10th May for £671.46.

Student Housing Company for 150 beds on a 43 week tenancy at £156/week for an en-suite room

More info: <https://www.napier.ac.uk/study-with-us/accommodation>

Accommodation off campus



The Mill House

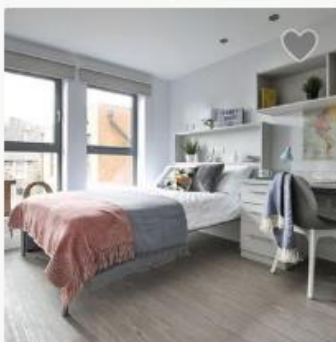
About
 +24
 [Map](#)

33 min
 20 min
 8 min

From
£153
 /week

Private Room	£153
Entire Place	£182

[View rooms](#)



iQ Fountainbridge


(5)
 About
 +20
 [Map](#)

42 min
 17 min
 10 min

From
£183
 /week

Private Room	£183
Entire Place	£198

[View rooms](#)



Arran House

About
 +15
 [Map](#)

42 min
 21 min
 9 min

From
£161
 /week

Private Room	£161
Entire Place	£187

[View rooms](#)

More Info: <https://www.student.com/uk/edinburgh/u/edinburgh-napier-university>

Accommodation off campus



Nido Haymarket

★★★★★ (1)

[About](#) [Map](#) +17

46 min 18 min 12 min



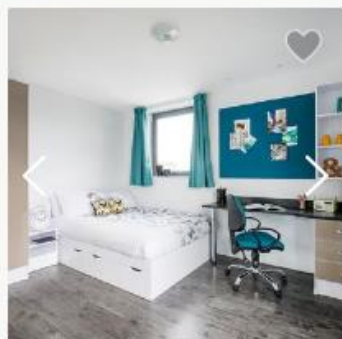
From

£165

/week

Private Room £165
Entire Place £179

[View rooms](#)



Canal Point

★★★★★ (1)

[About](#) [Map](#) +15

47 min 16 min 12 min



From

£164

/week

Private Room £164
Entire Place £250

[View rooms](#) →



The Bridge House

[About](#) [Map](#) +7

47 min 20 min 10 min

From

£132

/week

Private Room £132

[View rooms](#)

More Info: <https://www.student.com/uk/edinburgh/u/edinburgh-napier-university>

The situation and risk that could happen

If you have failed courses in Edinburgh Napier, you need to discuss with your head of program first by sending an email with choosing the 2 option following below:

- You will extend in Edinburgh Napier for 1 semester/ 1 year, to completed the failed course in Edinburgh Napier. Eventhough only 1 course.
- Comeback to BINUS and doing the single degree in BINUS only (not get the degree from Edinburgh Napier).



People
Innovation
Excellence

BINUS Contacts

Sutan Rieza Abdillah

International Program

BINUS UNIVERSITY INTERNATIONAL

Email: sabdillah@binus.edu

Phone: 021 – 53696969 Ext 3137

Thank You