

RMIT University

(3+1)

Pre Departure Info Session 2019

RMIT University

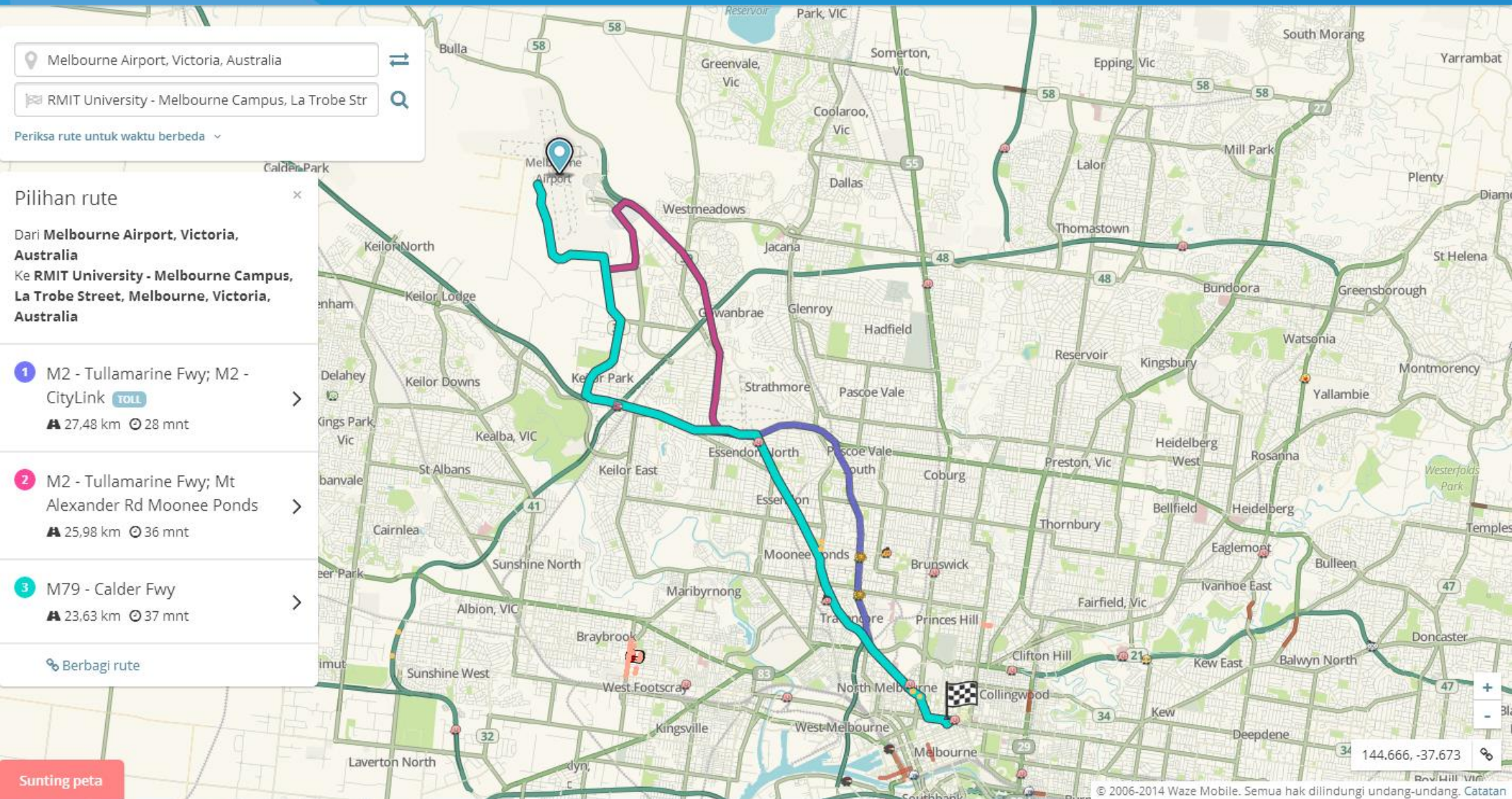


Our Melbourne City campus has grown to include several historic buildings since the establishment of the Working Men's College in 1887.

RMIT offers more than 800 programs and enrolls 82,000 students, including more than 12,000 at postgraduate level.

At RMIT you'll learn from experts working at the forefront of their fields. You'll benefit from teachers and lecturers who apply their research discoveries, industry judgment and specialist expertise directly to your programs and research.

Getting to RMIT University



Time travel \pm 25 minute from Melbourne International Airport

Airport pick-up service

Airport pick-up service

RMIT University organise arrival transfers for new international students. This free service is available to new arriving international student who have been accepted into an RMIT program as a full-fee paying international student for the first time.

Allied Chauffeured Cars Australia Pty Ltd (Allied) operates this airport pick-up service for RMIT University.

Important information:

- You must book your airport pick-up at least five (5) working days prior to your arrival in Melbourne.
- If changes are required after you have made the booking, please email: alliedcars@alliedcars.com.au.
- Please allow three (3) working days to receive your booking confirmation. If you did not receive it, please contact Allied directly at alliedcars@alliedcars.com.au to request your booking confirmation.
- A 'No Show' fee AU\$105 applies if you have requested for airport pick-up but fail to arrive on the scheduled flight or cancel the service or inform Allied of any changes.
- In some circumstances it may be necessary to make a charge. Please refer to [Additional Charges \(PDF 261kb\)](#). If applicable, these will be communicated to you by email.
- Accompanying family members arriving with the student will be picked up at no extra charge (provided the passengers and their baggage fit in a standard sedan).
- Allied will provide carry space for standard airline baggage allowances. You will have to arrange a taxi to transport any excess baggage that do not fit in a standard sedan's boot to your address.

Where to meet your driver

A representative from Harlan Transport Pty Ltd will meet you in the Arrivals Hall of Melbourne Airport's International Terminal (T2). Look for the Meeting Point sign and the representative will be close by.

Allied's driver will be waiting for you at the [Meeting Point](#) (large red sign) located near OPTUS store/ near the Travelex Foreign Exchange counter at Terminal 2 (T2) arrival hall. [Melbourne Airport Map \(PDF 466kb\)](#).

If you are unable to locate Allied's driver or experience a delay, you must call Allied at:

1800 350 850 - Free call from public phone in Australia

+613 8383 9999 - Calling from Overseas

Student Welcome Desk Service at Terminal 2

The Student Welcome Desk at Melbourne Airport is a one-stop shop for information and advice. The friendly staff will be able to provide general information you may need upon arrival.

This desk operated by City of Melbourne is located at: Travellers Information Service, International Arrivals Hall, Ground Floor at Terminal 2.

Useful link: <https://www.rmit.edu.au/study-with-us/international-students/prepare-to-arrive>

Around Campus



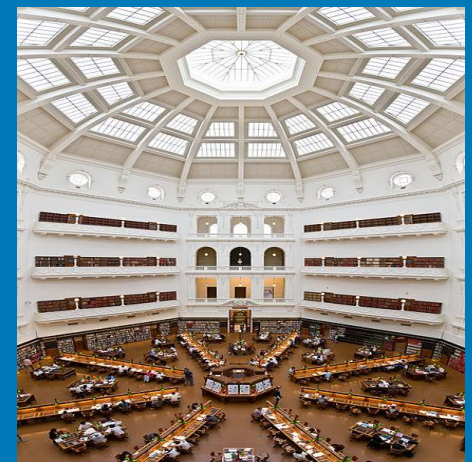
Queen Victoria Market



Melbourne Central shopping center



Melbourne Museum



State Library of Victoria



Student Activity

<http://www1.rmit.edu.au/students/clubs-activities>

Student Wellbeing Advisory

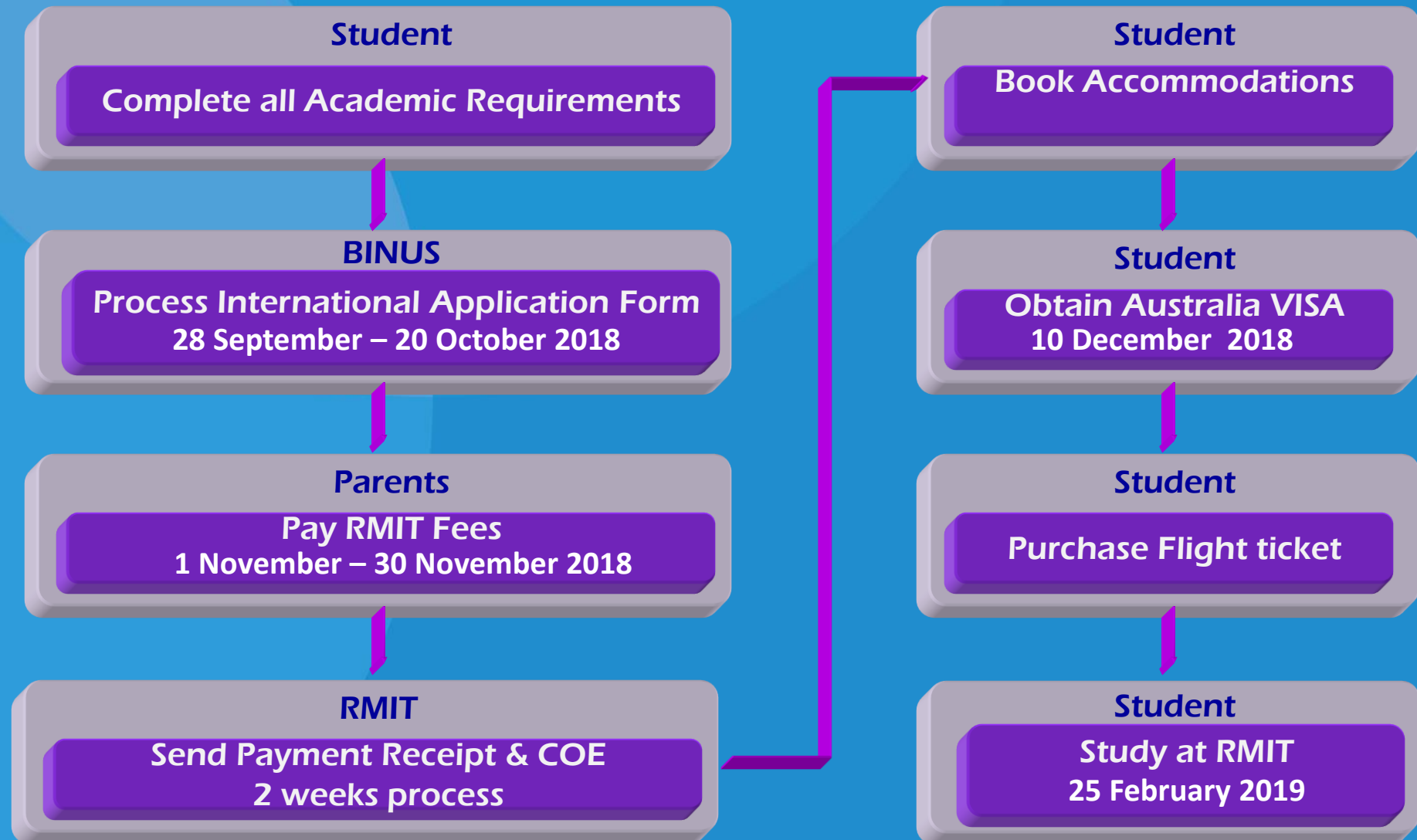
Offers practical help, advice and support to current local and international students.

- Accommodation advice
- Legal advice
- Money advice
- Making cultural and social adjustments
- Studying successfully

Email : student.wellbeing@rmit.edu.au

Telephone : City campus: +61 3 9925 2963
: Bundoora campus: +61 3 9925 7280

Sequence of process





Academic Requirements :

1. Completed all BINUS Course From Semester 1 – 5
2. IELTS (Academic) Score \geq for VISA requirement each band no less than 6.0
3. Accumulative GPA $\geq 2,75$
4. Thesis in semester 8 (You need to enrolled in BINUS)

Important Dates *:

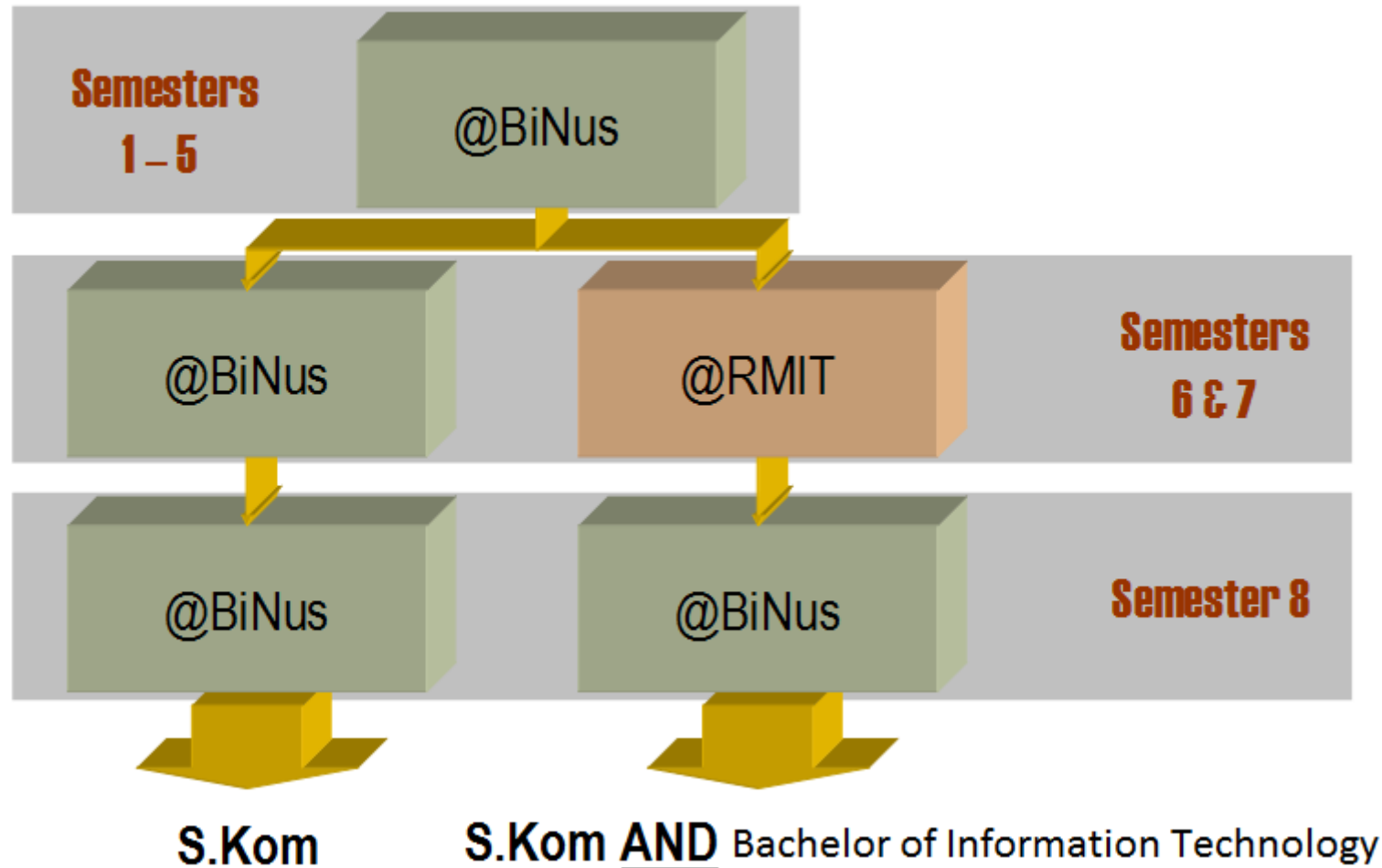
Orientation : 25 February – 1 March 2019

Class Start : 4 March 2019

*Please note that the above dates may be subject to minor change.



Program Structure



* Semester 8 : Bachelor thesis in BINUS



Approximate Fee and Cost :

TUITION FEE Approximate : AUD\$ \$33,600/ Year

BP3 BINUS : 1 Year

LIVING COST Approximate : AUD\$ 25,000/ Year

Banks In Australia, there are four major banks:

- ANZ
- NAB
- Westpac
- Commonwealth

Useful link:

<https://www.rmit.edu.au/study-with-us/international-students/study-in-australia/live-in-melbourne/cost-of-living/>

RMIT Accommodation

RMIT has carefully selected these purpose-built apartment complexes, designed specifically for you, and located close to our City, Bundoora, and Brunswick campuses.

The following accommodation all meet RMIT's quality standards, and offer a variety of furnished room types from studios to shared apartments at reasonable prices great communal facilities clear, transparent rental rates and agreements a respectful, inclusive and safe culture, and strong links to the university to support students in need.

More information about Accommodation at RMIT:

<https://www.rmit.edu.au/students/support-and-facilities/student-support/accommodation/accommodation-options/long-term-accommodation/student-apartments>

Accommodation

- RMIT Village

Centrally located, is only 15 minutes walk to RMIT University's city campus!

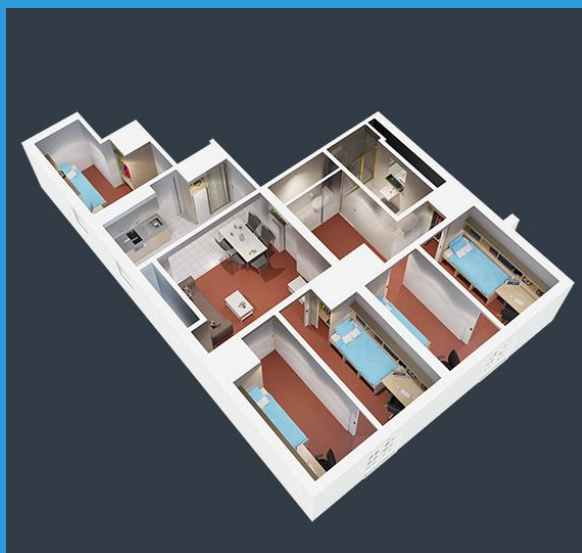


Prices (\$AUD) are per person / per week for 2018



2 bedrooms studio ground, 1 bathroom, balcony

40 Weeks	44 Weeks	Full Year	Semester 2
<i>available</i>	<i>available</i>	<i>available</i>	<i>available</i>
\$390.00	\$355.00	\$300.00	\$390.00
Check In: Feb 11, 2019 Check Out: Nov 18, 2019	Check In: Jan 28, 2019 Check Out: Dec 02, 2019	Check In: Jan 01, 2019 Check Out: Dec 31, 2019	Check In: Jul 05, 2019 Check Out: Dec 31, 2019



5 bedrooms apartment, 2 bathroom

40 Weeks	44 Weeks	Full Year	Semester 2
<i>limited</i>	<i>limited</i>	<i>limited</i>	<i>available</i>
\$429.00	\$390.00	\$330.00	\$429.00
Check In: Feb 11, 2019 Check Out: Nov 18, 2019	Check In: Jan 28, 2019 Check Out: Dec 02, 2019	Check In: Jan 01, 2019 Check Out: Dec 31, 2019	Check In: Jul 05, 2019 Check Out: Dec 31, 2019

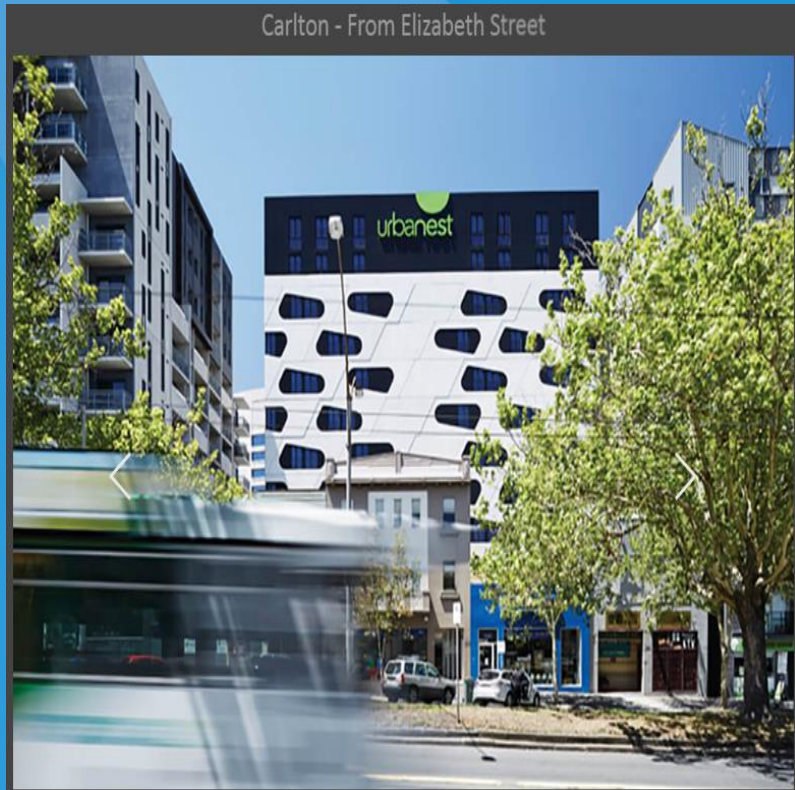
Useful link:

<https://www.mystudentvillage.com/au/rmit-village/>

- Urbanest Carlton

To Apply please open:

<https://cms.urbanest.com.au/website/PmX/generalEnquiry.jsp>



Twin share studio	STUDIO WITH DOUBLE BED	LARGE STUDIO WITH DOUBLE BED	STUDIO WITH DOUBLE BED AND TERRACE
\$ 325	\$ 489	\$ 509	\$ 529
Per week	Per week	Per week	Per week
Prices are listed in \$AUD and are subject to change dependent on availability and seasonal promotions. Prices are per person per week. Bond equal to 4 weeks rent and up to 2 weeks advance rent is required to secure your booking.	Prices are listed in \$AUD and are subject to change dependent on availability and seasonal promotions. Prices are per person per week. Bond equal to 4 weeks rent and up to 2 weeks advance rent is required to secure your booking.	Prices are listed in \$AUD and are subject to change dependent on availability and seasonal promotions. Prices are per person per week. Bond equal to 4 weeks rent and up to 2 weeks advance rent is required to secure your booking.	Prices are listed in \$AUD and are subject to change dependent on availability and seasonal promotions. Prices are per person per week. Bond equal to 4 weeks rent and up to 2 weeks advance rent is required to secure your booking.

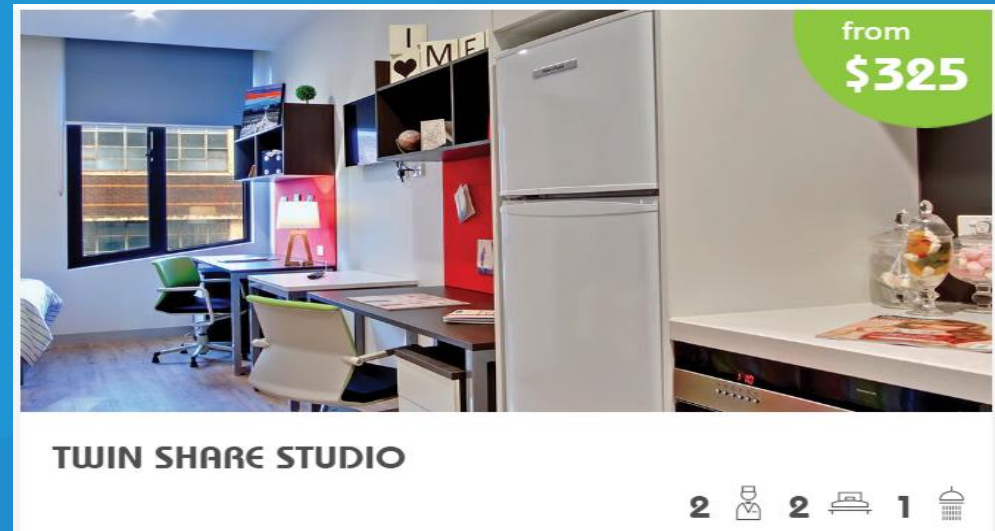
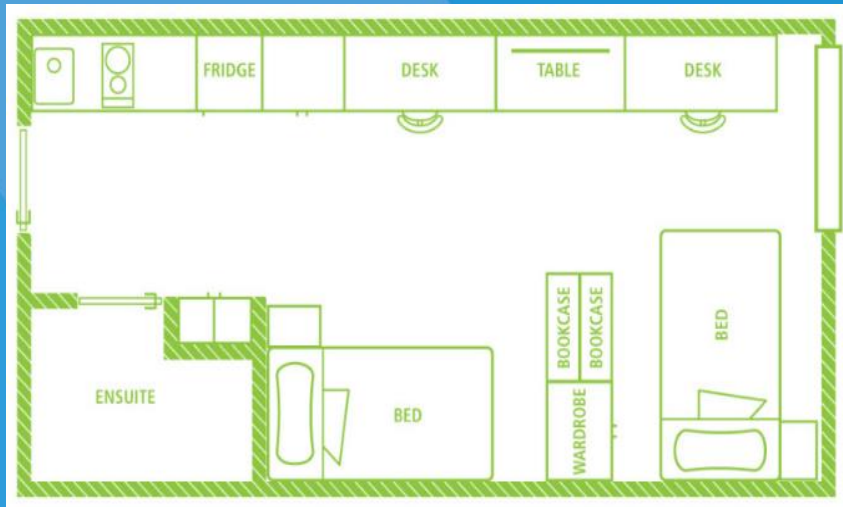
- 900 m to RMIT City campus
- 3.8km to Brunswick campus
- Trams and buses nearby
- 272 beds : 1-bed studios; Twin-share studios; 2-bed apartment

Useful link:

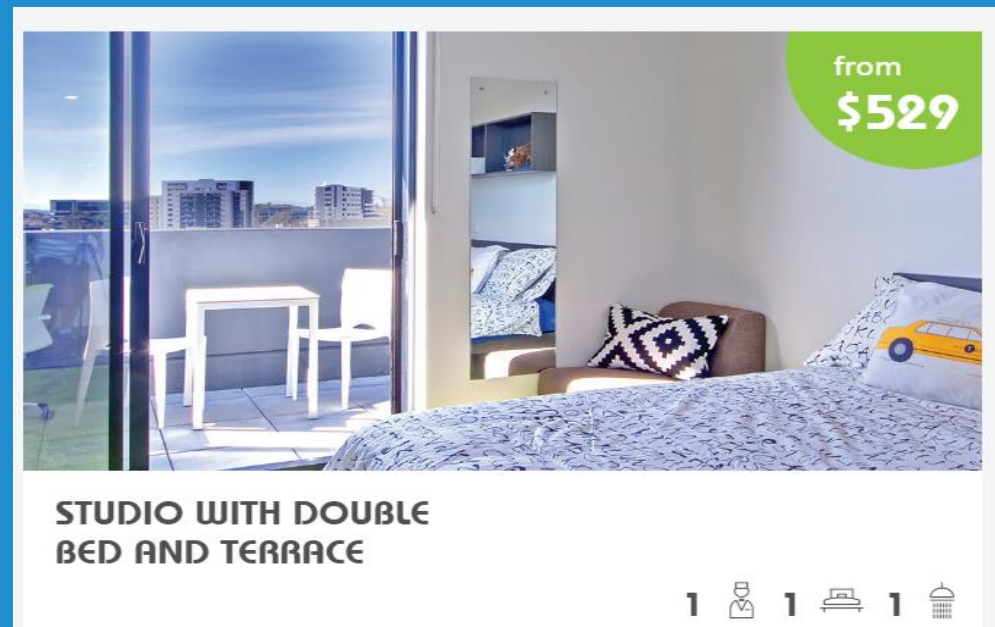
<https://urbanest.com.au/melbourne/carlton/#features>

Urbanest Carlton

- TWIN SHARE STUDIO



- STUDIO WITH DOUBLE BED AND TERRACE



- Atira La Trobe Street



(opening in January 2019)

- 300m to City campus
- 5.3km to Brunswick campus
- Trams, trains and buses nearby
- 883 beds:
 - 1-bed studios
 - Twin-share rooms
 - 2, 4, 6 and 7-bed apartments

Useful link:

<https://latrobe.atira.com/>

Atira La Trobe Street

- Twin share apartment**



ROOM/week	51 WEEKS	48 WEEKS	24 WEEKS
Low View	\$309	\$328	\$338
High View	\$319	\$339	\$349

Twin Studios offer affordable accommodation without sacrificing comfort and style. Individual desk spaces are included, with a chair & lamp, whilst the fully equipped kitchenette has everything you need for daily living.

- Studio saver**



ROOM/week	51 WEEKS	48 WEEKS	24 WEEKS
Low View	\$419	\$445	\$455
High View	\$439	\$466	\$476

Live in your own private space without the large price tag in our Studio Saver apartments. They offer everything you need for a fully self-contained lifestyle including a fully equipped kitchenette and private ensuite bathroom.



The situation and risk that could happen

If you have failed courses at RMIT, you need to discuss with your head of program first by sending an email with choosing the 2 option following below:

- You will extend in RMIT for 1 semester/ 1 year (possibility), to completed the failed course in RMIT. Even though only 1 course.
- Comeback to BINUS and doing the single degree in BINUS only (not get the degree from RMIT).



- Persatuan Pelajar Indonesia di Melbourne: <http://www.ppia-vic.org/new-page-1/>

Thank You

frequently

asked questions

BINUS contact person

Sutan Rieza Abdillah

Phone: 021-7202222 ext. 3137

email: sabdillah@binus.edu

RMIT representative

- Ms.Fenny Yunita Suwandhi

email: fenny.yunitasuwandhi@rmit.edu.au