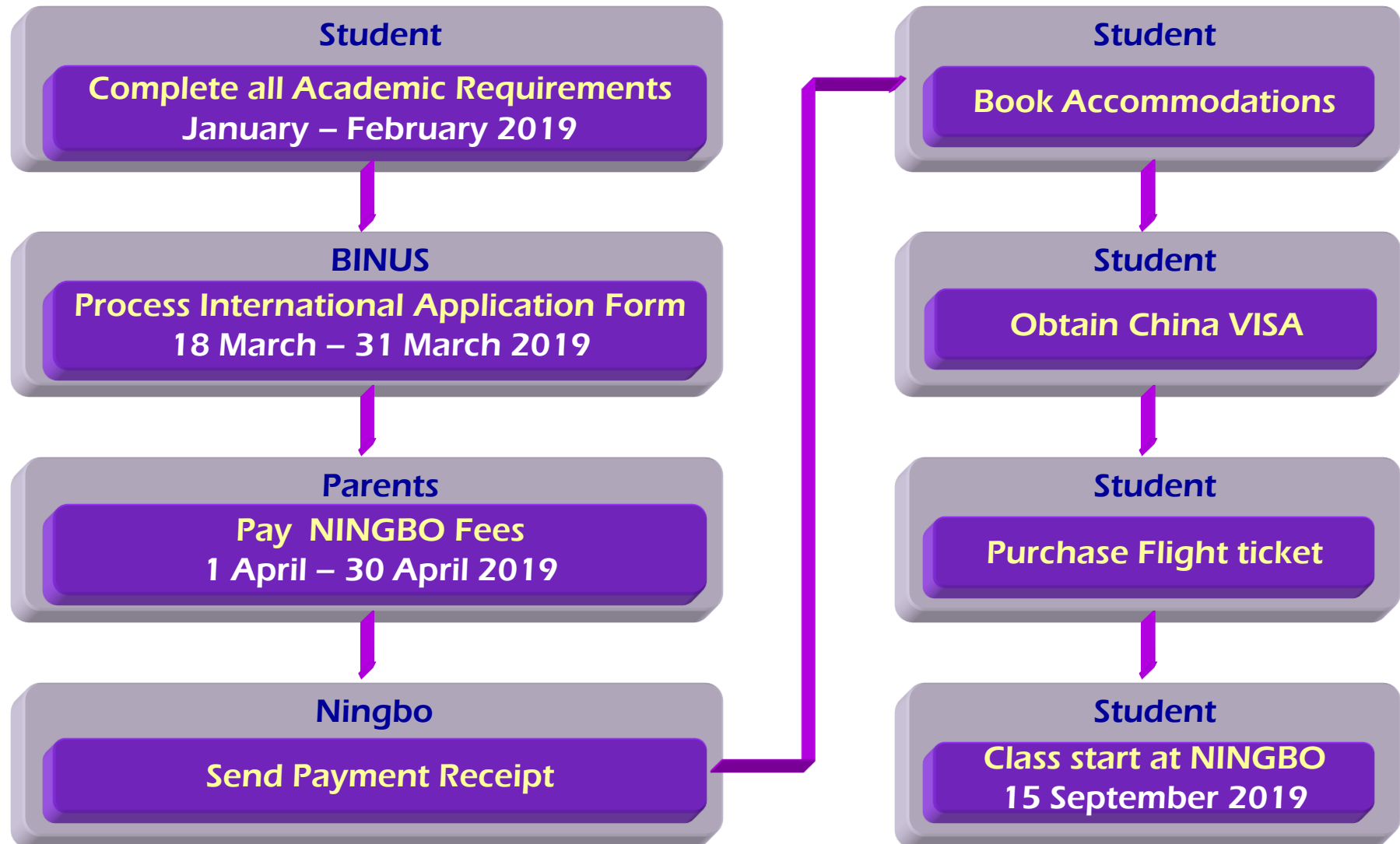


NINGBO university

(Double degree) 2 + 2 Program

Time Line



NINGBO Campus



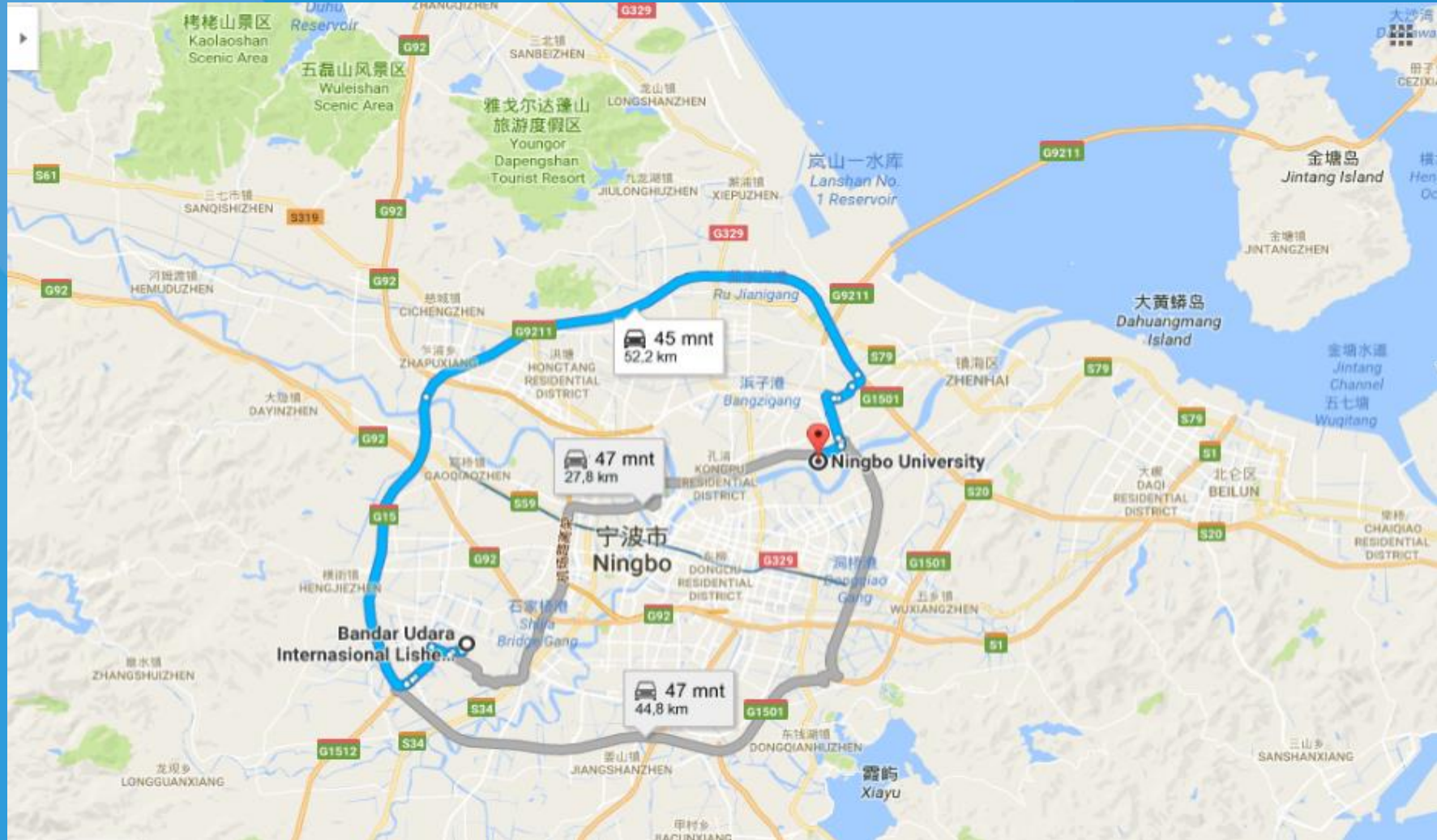
NINGBO campus is located in Jiangbei District, Ningbo, Zhejiang, China. The University has five campuses, covering an area of over 160 hectares, with a floor space totaling 560,000 square meters. The main campus, adjacent to Ningzhen Road in the north and Yongjiang River in the south, offers wide space for study and research with magnificent buildings and pleasant lawns and greenery.

Around Campus



In Jiangbei district there are: Baoguo Temple, Cicheng Confucious Temple, Ningbo Museum of Art, Wantou Bridge, Jiangbei Cathedral

Ningbo university form Lishe airport



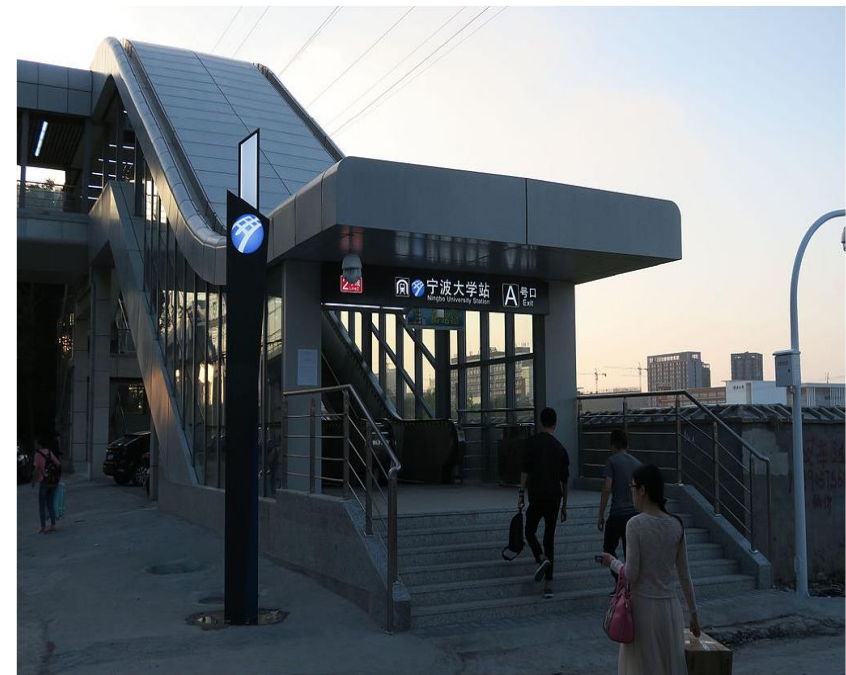
From the airport there is NINGBO rail transit, please choose for line 2. Line 2 is directly go to NINGBO university.* Please kindly find the railway maps [here](#).

NINGBO rail transit

Ningbo Rail Transit also known as Ningbo Metro is a rapid transit system serving the city of Ningbo, Zhejiang and its suburbs. From Lishe airport you need to passed 18 railway station before you arrived in NINGBO university railway station.



Ningbo university railway station (inside)



Ningbo university railway station (outside)



Important Date*

Orientation:
8 September 2019

Start Class :
15 September 2019

*schedule may be change due the prior

Requirements :

1. Completed all BINUS Course From Semester 1 – 4
2. Passed academic english 1 dan 2
3. Last Cumulative GPA Min : 2,5



Approximate Fees and Costs

University Fee for 2019 :

- NINGBO University : 18,000 CNY/year
- BP3 (fixed tuition) BINUS 2 year & Development fee*

Total Living Cost 2019 :

LIVING COST :

Health Insurance: 800 CNY/year

Residence Permit: 1,000 CNY/year

Living Cost (food): 7,500 CNY/year

Accommodation: 12,000 CNY/year

* If there is



Accomodation

The International Students Apartment offers double rooms and single rooms with hostel standard facilities such as TV, Bathroom, Toilet and air-conditioner.

Double Room:

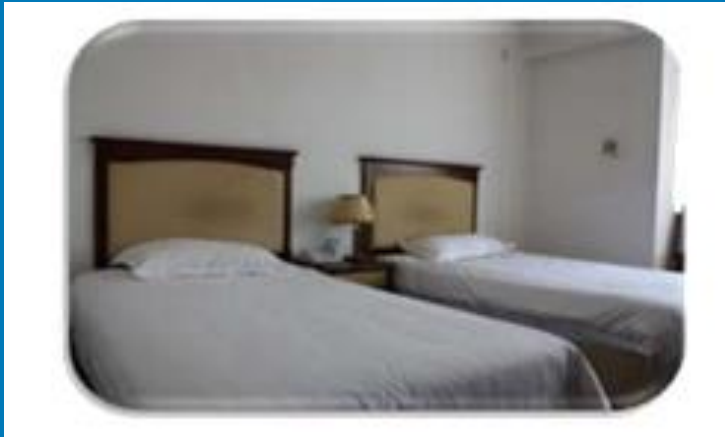
Location : in Campus Hotel for International Students

Cost : 1800 per month (900RMB per person/Month)

Single-room:

Location : in Campus Hotel for International Students

Cost : 1200 per month



Double Room



The International Students Apartment



Single Room



The Hallway



The situation and risk that could happen

If you have failed courses in Ningbo, you need to discuss with your head of program first by sending an email with choosing the 2 option following below:

- You will extend in Ningbo 1 semester/1 year, to completed the failed course in Ningbo. Eventhough only 1 course.
- Comeback to BINUS and doing the single degree in BINUS only (not get the degree from Ningbo).

BINUS Contacts

Sutan Rieza Abdillah

International Program

BINUS UNIVERSITY INTERNATIONAL

sabdillah@binus.edu

Phone: 021 – 53696969 Ext 3137

Thank You