

# Cologne Business School (CBS) (3+1)

Pre Departure Info Session 2019

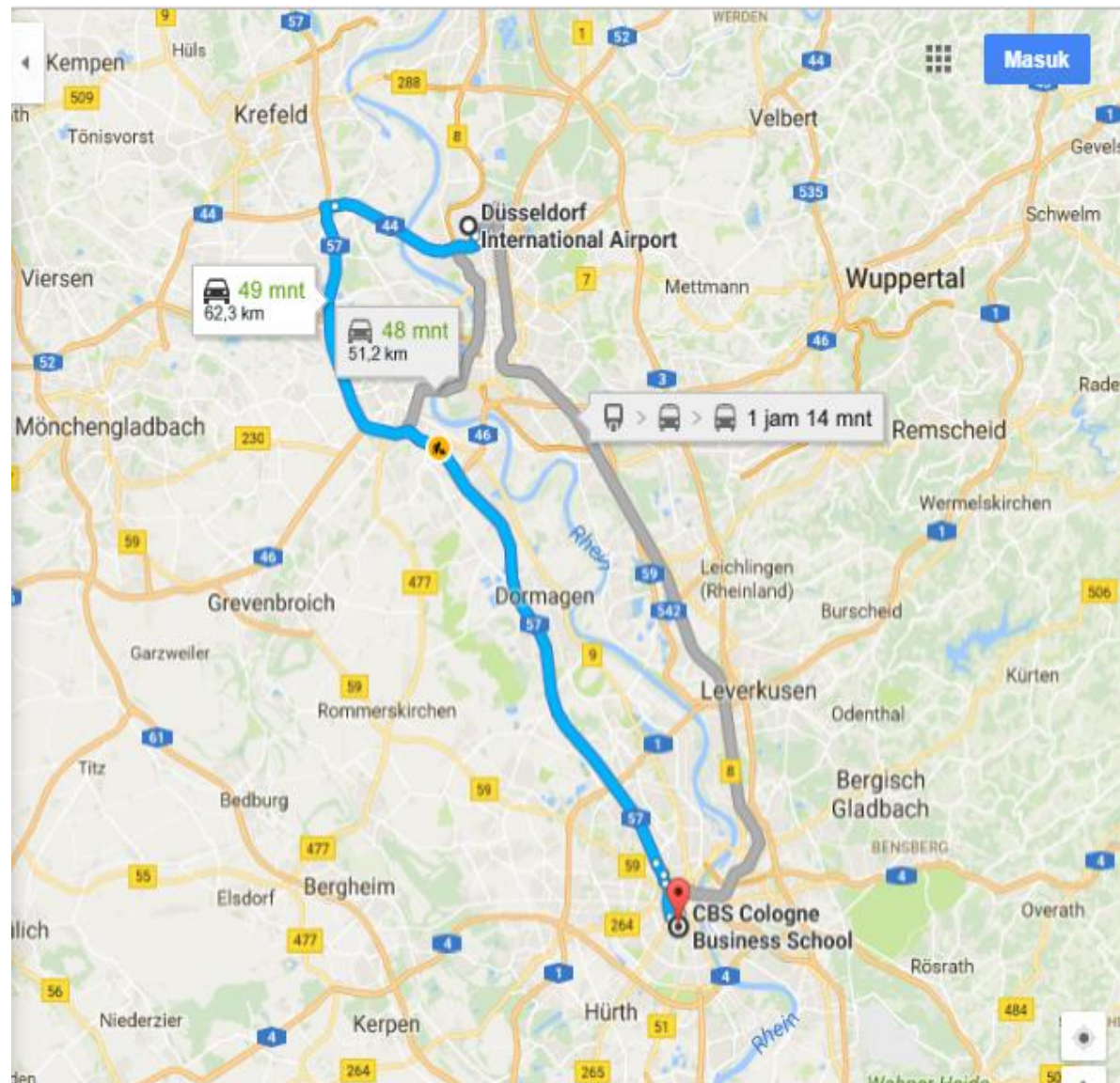
# CBS Introduction



**Cologne Business School GmbH (CBS)** is a private [business school](#) established in 1993 in the city of [Cologne, Germany](#).

In 2011 CBS cooperation with Dr. Juergen Meyer Foundation for a research program focused on business ethics, corporate governance and corporate social responsibility.

The CBS campus consists of three main buildings and is located in the Neustadt Süd area of Cologne.



Masuk

Düsseldorf International Airport

CBS Cologne Business School, Hardefu

+

Berangkat sekarang

OPSI

Tambahkan tujuan

Kirim petunjuk arah ke ponsel

melalui A57

Rute terbaik

DETAIL

49 mnt

62,3 km

melalui B1 dan A57

1 jam 14 mnt

05.20–06.34

SkyTr

RE

16



# Around CBS campus

People  
Innovation  
Excellence



[Cologne Cathedral](#)



[Hohenzollern Bridge](#)

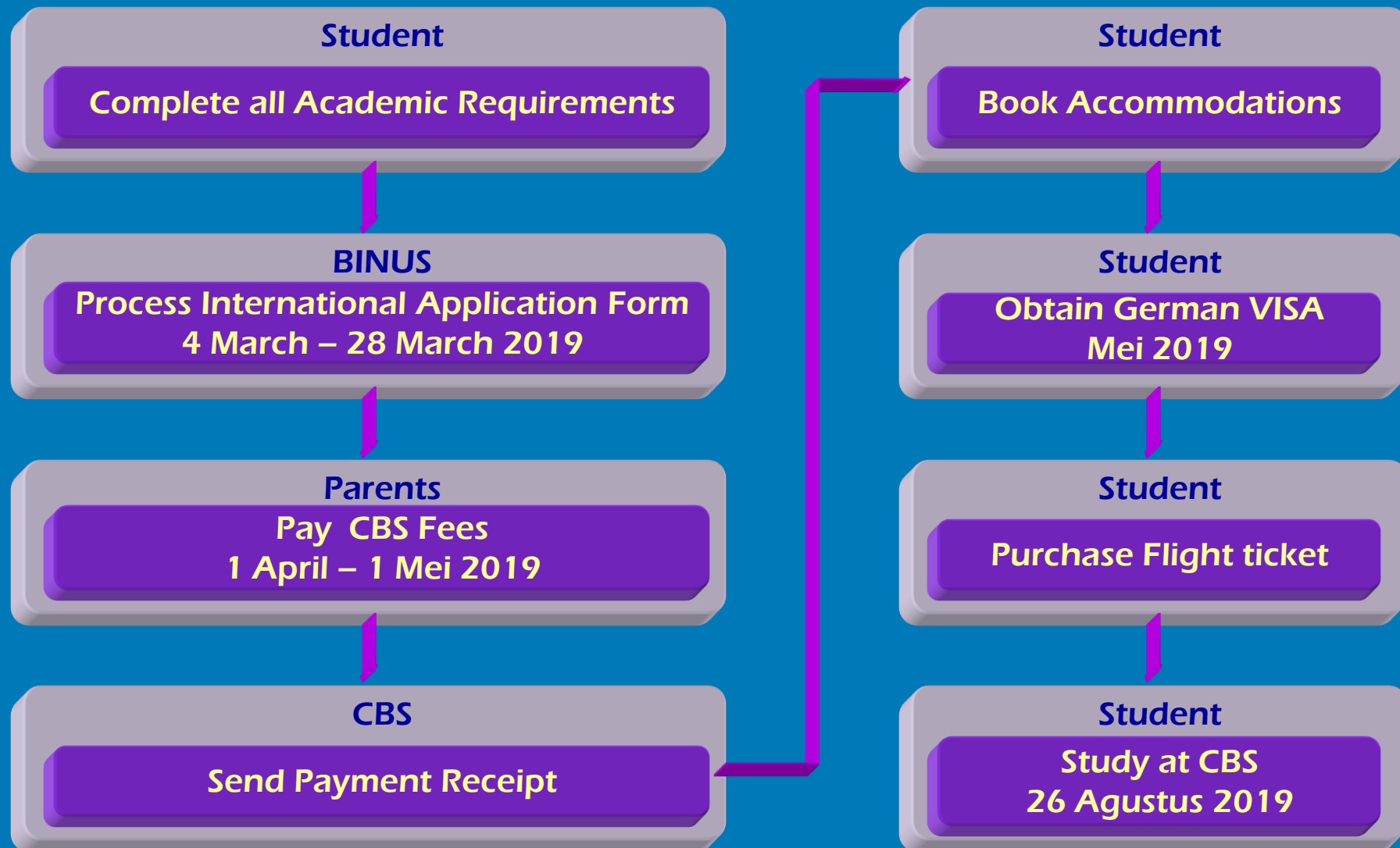


[Great St. Martin Church](#)



[Colonia TV-tower](#)

# Time line\*



\*Schedule might be change without prior notice

## Requirements :

- 1. Completed all BINUS Course From Semester 1 - 6**
- 2. English Requirements:** Passed Academic English 1 and 2
- 3. Last GPA Min : 2.75**

## Important Dates :

- Orientation in 19 – 23 August 2019
- Class started in 26 August 2019

## Approximate Fee :

- **Tuition in CBS** : Eur 10,380/year + Eur 600
- **Public transportation in Cologne & student union fee** : Eur 270
- **BINUS Fixed tuition fee 1 year** : Please check in BINUS student services

## Approximate Living Cost :

- **In Germany for 1 year** is Eur 9,800

## Accommodation:

Studying in Cologne also means living in Cologne. As in any metropolis, there is an infinite variety of possibilities, and it is worthwhile to start searching early, to apply for a place in a student hall of residence in good time and to be persistent.

During your studies at CBS or exchange semester in Cologne? The CBS Accommodation Office is there to assist you in your search: in person, with advice and support. CBS has arranged contingents for CBS students with numerous halls of residence, works together with the [Kölner Studierendenwerk](#) (Cologne Student Union) and connects fellow students who offer or seek accommodation! We introduce you to interesting options.

**Please notice:** Due to limited capacities and the increasing demand for accommodation, **we kindly advise you to apply for a place in our dormitories at latest 2 months** before the semester starts. Otherwise, we cannot guarantee you a direct moving during the first semester days”.

### More information:

<https://cbs.de/students/freshcbs/accommodation-for-non-german-citizens/#1529480475585-7d7f60f7-f4ea>





## Accommodation :

### 1.) i-Live Urban Living Köln

Urban Living Köln, a brand-new building in a prime location. It is newly built house with fully furnished and modern micro apartments. They always feature their own bathroom and kitchen, sometimes also a dishwasher.

The apartments are tastefully furnished so you don't need a moving van or the hassle of buying furniture when moving in and out. The location in the city center between CBS, high street shopping, old town and the nightlife is phenomenal. From there you can – if you like – do everything by foot.

**The buildings are just 15 minutes walking distance from the CBS campus!** On site, a community manager takes care of everything, from storing your online shopping parcels to party and event organization. Roof terrace, fitness studio, study rooms, event kitchen, underground parking for cars and bicycles: the iLive team planned everything with passion to detail.



# Accommodation:

## 1.) i Live – Urban Living Köln



### RENT:

i-Live offered All single apartments include an own bathroom and a single kitchen per floor.

Category	Rent/semester
Comfort	4,170 €
Comfort L	4,770 €



## Accommodation :

### 2.) Quartillion

The newly opened Quartillon houses in the popular Ehrenfeld district are an excellent choice if you value comfort and quality. Quartillon operates apartment houses with comfortable single apartments that are specially tailored to the needs of students.

All apartments are already equipped with beautiful furniture, a kitchen and have their own spacious bathroom. Even its own cellar box is included.

**The building is just 15 minutes walking distance from the CBS campus!** In addition, you can expect amenities such as the possibility to park your bike or car, and there is a local manager who will be happy to answer your questions. A special feature are the common rooms: Here you can learn or party with other residents.

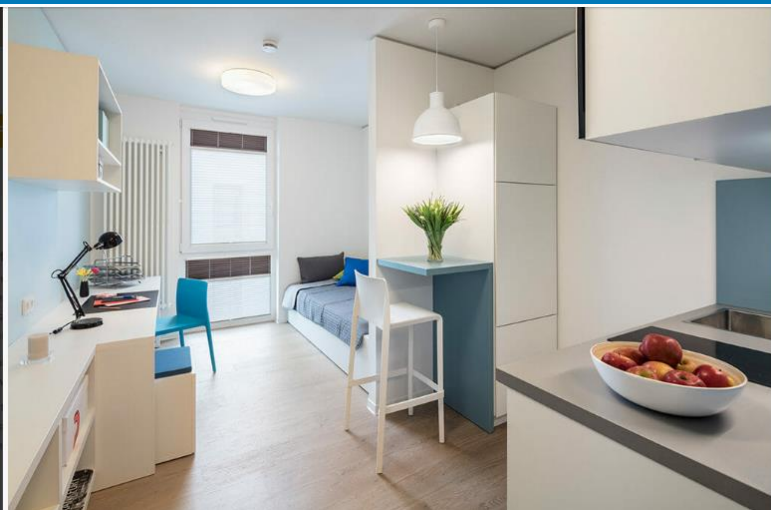


## Accommodation:

### 2.) Quartillion



**RENT:** Quartillion offered All apartments have a high quality of living, are single ones and include an own bathroom and kitchen.



Category	Fall Semester	Spring Semester
Comfort Apartment (Single)	3,300 – 3,800 €	3,300 – 3,800 €



## Accommodation :

### 3.) CBS student residence

The Cologne Business School operates an own student residence with fully equipped double and single rooms in close to the popular “Südstadt” neighborhood of Cologne, surrounded by an abundance of cool shops, cafés and bars. The house offers you ideal accommodation while you are a visiting student at the CBS.

The 1 and 2-bed rooms are bright, friendly and well equipped. Each room is furnished with a bed, closet, desk, storage rack, lamps, beddings and private safes. The building is just **38 minutes walking distance from the CBS campus!**

A large and spacious common kitchen is fully equipped with refrigerators, a freezer, stove, oven and microwaves. Plenty of bathrooms on each floor are available to all residents. Furthermore, students share a comfortable living room with dining facilities, couches and a TV as well as a big garden.



## Accommodation:

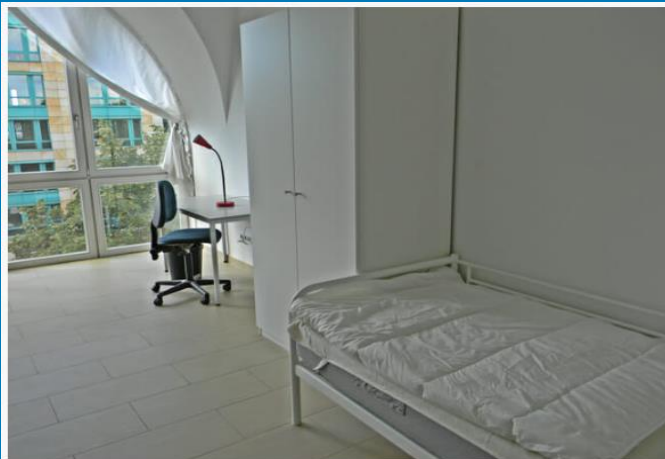
### 3.) CBS student residence



#### RENT:

The building has 19 single and double rooms which are classified into different categories according to their size.

Category	Fall Semester	Spring Semester
1 (double S)	1,313 €	1,615 €
1.2 (double M)	1,713 €	2,115 €
1.3 (double L)	1,963 €	2,365 €
2 (single S)	2,513 €	3,015 €
2.1 (single M)	2,593 €	3,465 €





## The situation and risk that could happen

If you have failed courses in CBS, you need to discuss with your head of program first by sending an email with choosing the 2 option following below:

- You will extend in CBS for 1 semester/ 1 year, to completed the failed course in CBS. Eventhough only 1 course.
- Comeback to BINUS and doing the single degree in BINUS only (not get the degree from CBS).



Sutan Rieza Abdillah

International Program

BINUS UNIVERSITY INTERNATIONAL

email: [sabdillah@binus.edu](mailto:sabdillah@binus.edu)

Phone: 021 – 53696969 Ext 3137

Thank You